

Χολαργός **88 - 72** Ερμής Αργ/λης

|     |         |     |         |     |
|-----|---------|-----|---------|-----|
| 52% | 12 / 23 | FT  | 23 / 36 | 64% |
| 57% | 20 / 35 | 2FG | 17 / 39 | 44% |
| 36% | 12 / 33 | 3FG | 5 / 15  | 33% |
| 46  | 34 - 12 | Rb  | 29 - 5  | 34  |
|     | 16      | Tu  | 15      |     |

Referees: Χρηστίδης, Κατσέλη, Παπαχρυσανθόπουλος

| By Quarter    | 1  | 2  | 3  | 4  | End of Quarter | 1  | 2  | 3  | 4  |
|---------------|----|----|----|----|----------------|----|----|----|----|
| Χολαργός      | 29 | 15 | 23 | 21 | Χολαργός       | 29 | 44 | 67 | 88 |
| Ερμής Αργ/λης | 13 | 24 | 12 | 23 | Ερμής Αργ/λης  | 13 | 37 | 49 | 72 |



Ερμής Αργ/λης

Coach: Π. Γκαναβίας, Σ. Μουσιδής

Fastbreaks: 3 / 8

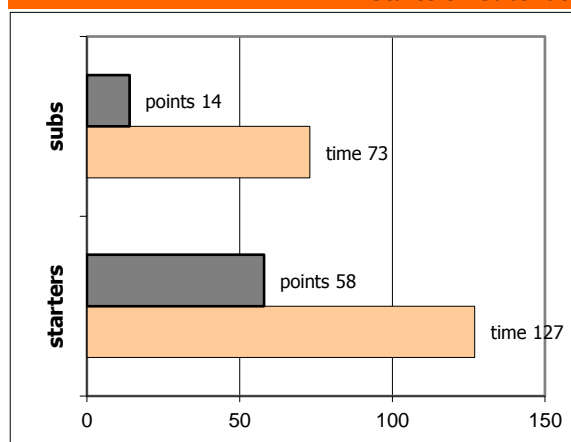
| #           | Player           | Time<br>(min) | Pts | Ft      | 2Fg     | 3Fg    | +/- | Rbs |    | As | St | Tu | Bl | Fouls |    | Eff |
|-------------|------------------|---------------|-----|---------|---------|--------|-----|-----|----|----|----|----|----|-------|----|-----|
|             |                  |               |     |         |         |        |     | de  | of |    |    |    |    | dr    | co |     |
| 4           | Ραζής Μ.         | 19            | 0   | 0 / 0   | 0 / 0   | 0 / 1  | -9  | 3   | 0  | 0  | 2  | 2  | 0  | 1     | 3  | 2   |
| 17          | Παπανδρέου Γ.    | 23            | 4   | 2 / 4   | 1 / 3   | 0 / 1  | -4  | 5   | 0  | 2  | 1  | 3  | 0  | 4     | 4  | 4   |
| 6           | Καβαλαράκης Ν.   | 32            | 3   | 1 / 2   | 1 / 7   | 0 / 1  | -12 | 5   | 1  | 3  | 1  | 3  | 0  | 2     | 3  | 2   |
| 7           | Παξινός Σ.       | 27            | 9   | 1 / 4   | 4 / 6   | 0 / 3  | -23 | 3   | 2  | 1  | 1  | 1  | 0  | 4     | 4  | 7   |
| 8           | Τσιπίδης Κ.      | 21            | 7   | 1 / 2   | 3 / 4   | 0 / 1  | 7   | 3   | 0  | 0  | 0  | 3  | 0  | 5     | 4  | 4   |
| 9           | Πέττας Ν.        | 31            | 31  | 13 / 15 | 3 / 8   | 4 / 7  | -14 | 4   | 0  | 4  | 2  | 2  | 0  | 10    | 4  | 29  |
| 10          | Γκόγκας Σπ.      | 7             | 4   | 1 / 2   | 0 / 1   | 1 / 1  | 2   | 1   | 0  | 0  | 0  | 0  | 0  | 1     | 0  | 3   |
| 11          | Παπαπέτρος Ευ.   | 6             | 0   | 0 / 0   | 0 / 0   | 0 / 0  | -7  | 0   | 0  | 0  | 0  | 0  | 0  | 0     | 0  | 0   |
| 18          | Τσούπρος Δ.      | 6             | 0   | 0 / 0   | 0 / 0   | 0 / 0  | -5  | 0   | 0  | 0  | 1  | 0  | 0  | 0     | 0  | 1   |
| 13          | Σωτηρόπουλος Ευ. | 0             | 0   | 0 / 0   | 0 / 0   | 0 / 0  | 0   | 0   | 0  | 0  | 0  | 0  | 0  | 0     | 0  | -   |
| 14          | Τσιώκος Ν.       | 27            | 14  | 4 / 7   | 5 / 10  | 0 / 0  | -13 | 4   | 2  | 5  | 1  | 0  | 2  | 6     | 2  | 20  |
| 15          | Ντόλγκαν Μ.      | 1             | 0   | 0 / 0   | 0 / 0   | 0 / 0  | -2  | 1   | 0  | 0  | 0  | 0  | 0  | 0     | 0  | 1   |
| Team        |                  |               |     |         |         |        |     | 0   | 0  |    |    | 1  | 0  | 0     |    |     |
| 1st quarter |                  |               | 13  | 5 / 7   | 4 / 10  | 0 / 5  |     | 7   | 2  | 1  | 0  | 3  | 0  | 7     | 5  | 7   |
| 2nd quarter |                  |               | 24  | 10 / 12 | 4 / 10  | 2 / 3  |     | 9   | 1  | 4  | 4  | 4  | 0  | 10    | 5  | 29  |
| 3rd quarter |                  |               | 12  | 0 / 4   | 3 / 10  | 2 / 3  |     | 5   | 1  | 5  | 1  | 3  | 2  | 4     | 5  | 11  |
| 4th quarter |                  |               | 23  | 8 / 13  | 6 / 9   | 1 / 4  |     | 8   | 1  | 5  | 4  | 5  | 0  | 12    | 9  | 25  |
| Final Stats |                  | 200           | 72  | 23 / 36 | 17 / 39 | 5 / 15 | -80 | 29  | 5  | 15 | 9  | 15 | 2  | 33    | 24 | 72  |
|             |                  |               |     | 64%     | 44%     | 33%    |     | 34  |    |    |    |    |    |       |    |     |

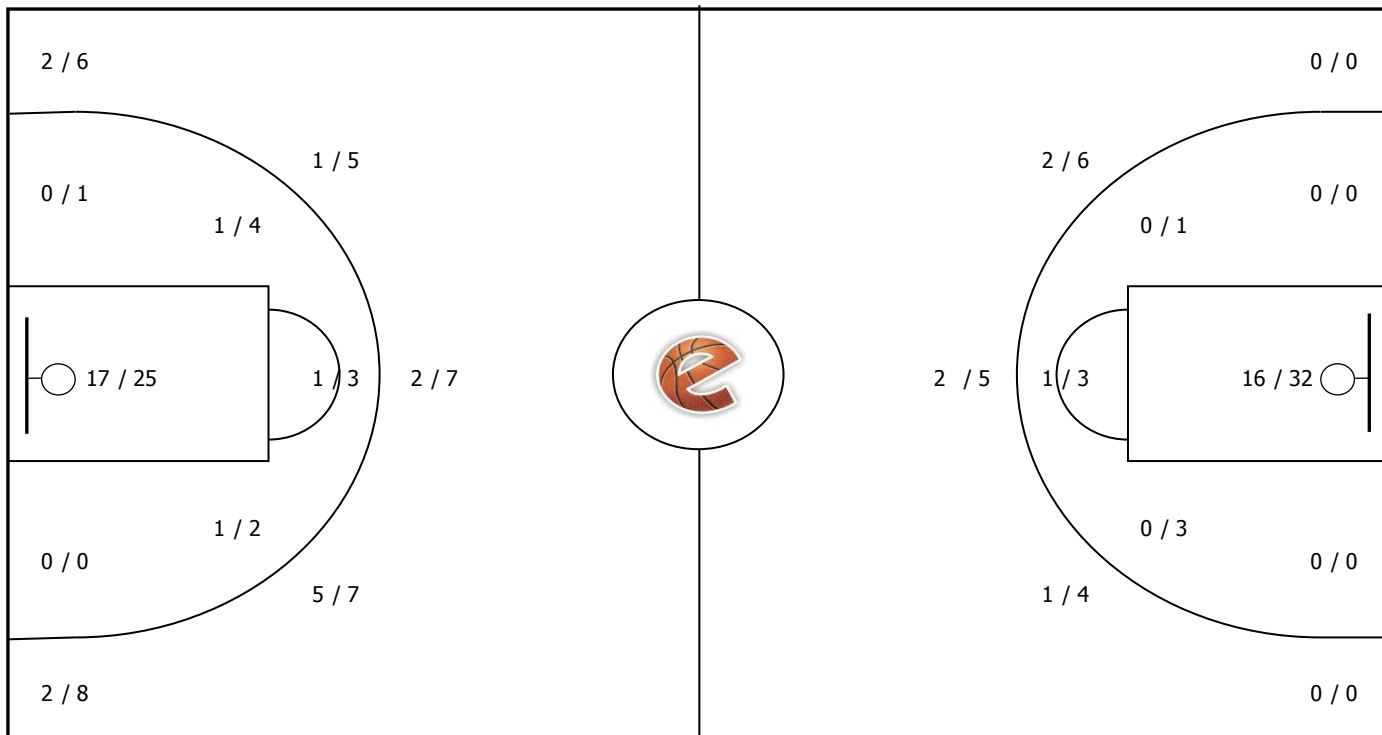
Χολαργός

Coach: Θωμόπουλος Θ.

| #  | Player            | Pts | - | 3s |
|----|-------------------|-----|---|----|
| 17 | Μάλφας Χρ.        | 0   | - | 0  |
| 5  | Γιαννουλάκης Ευ.  | 12  | - | 2  |
| 6  | Ιωακειμίδης Θ.    | 14  | - | 4  |
| 7  | Κατωπόδης Αν.     | 7   | - | 0  |
| 18 | Σφηκιάκης Αν.     | 0   | - | 0  |
| 19 | Κουτσονικόλας Αν. | 5   | - | 1  |
| 21 | Ψημίτης Μ.        | 14  | - | 1  |
| 11 | Λούκας Ευ.        | 5   | - | 1  |
| 41 | Τζελέπης Ι.       | 3   | - | 1  |
| 13 | Ραπτιδής Αγγ.     | 1   | - | 0  |
| 14 | Κουκουινιάς Ι.    | 12  | - | 1  |
| 77 | Καλαντζή Μ.       | 15  | - | 1  |

Starters - Subs ratio

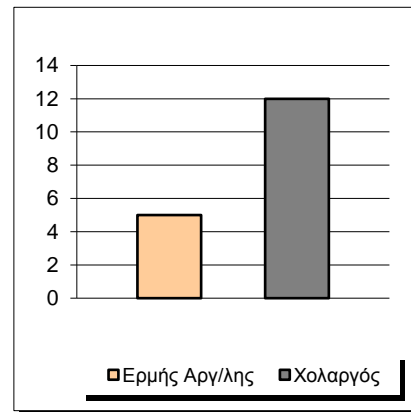
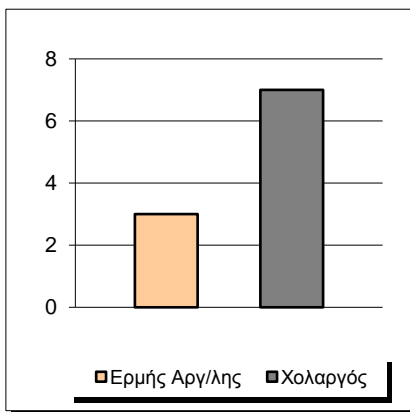
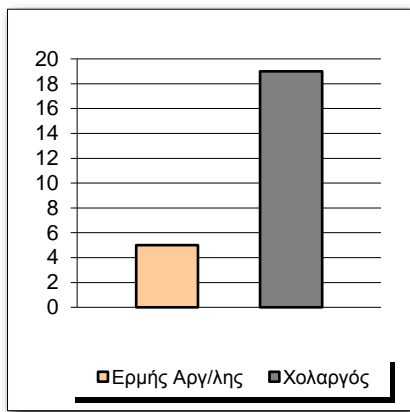




Fastbreak Pts

Turnover Pts

Second Chance Pts



Possessions

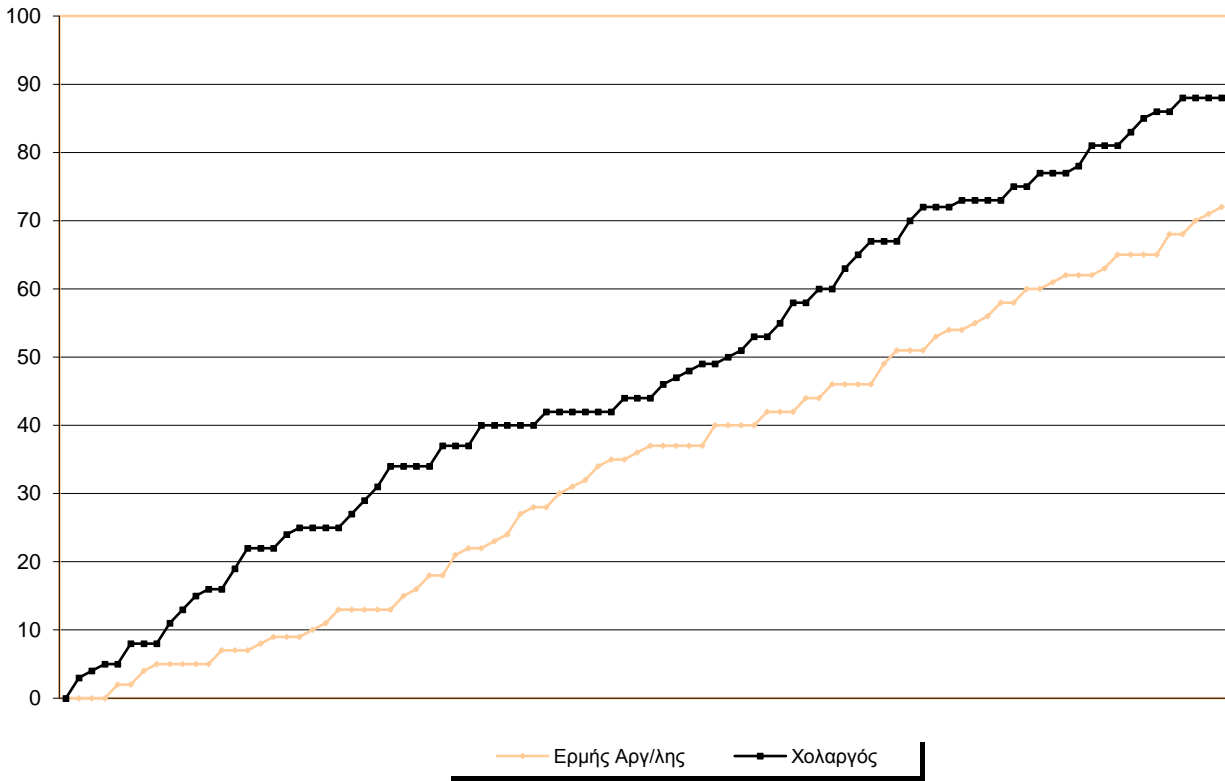
Notes

Ο Ερμής Αργ/λης είχε 102 κατοχές,  
 εκ των οποίων κατέληξαν: 54 σε σουτ  
 15 σε λάθος  
 και 33 σε κερδ. φάουλ

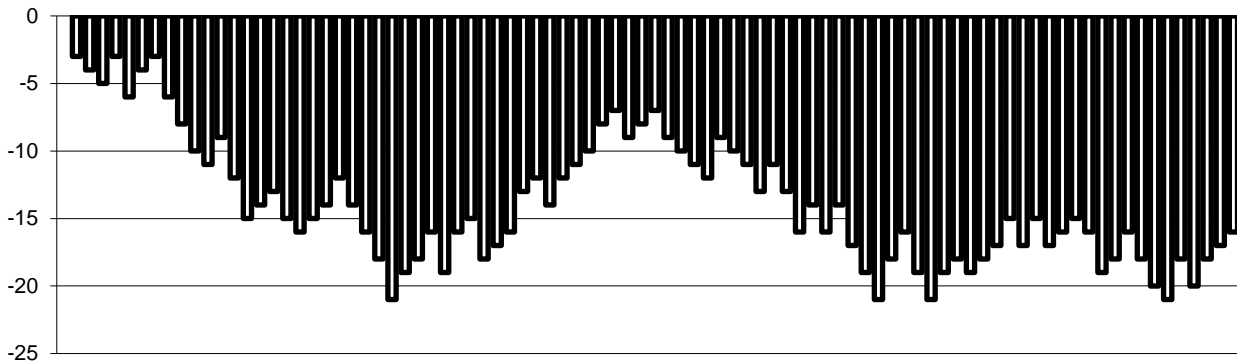


**GRAPHIC STATS**

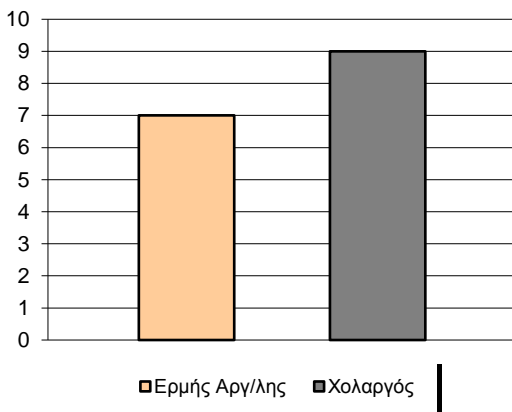
**SCORE EVOLUTION**



**SCORE DIFFERENCE**



**LARGEST SCORING RUN**



**LARGEST LEAD**

